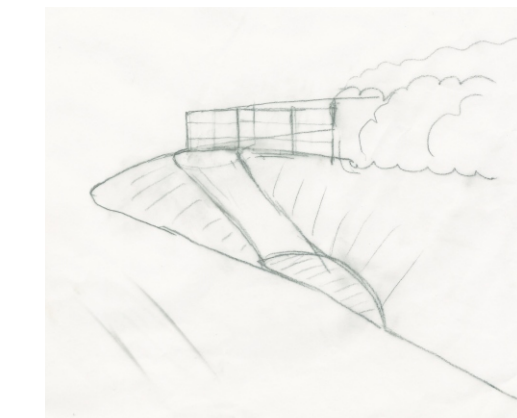
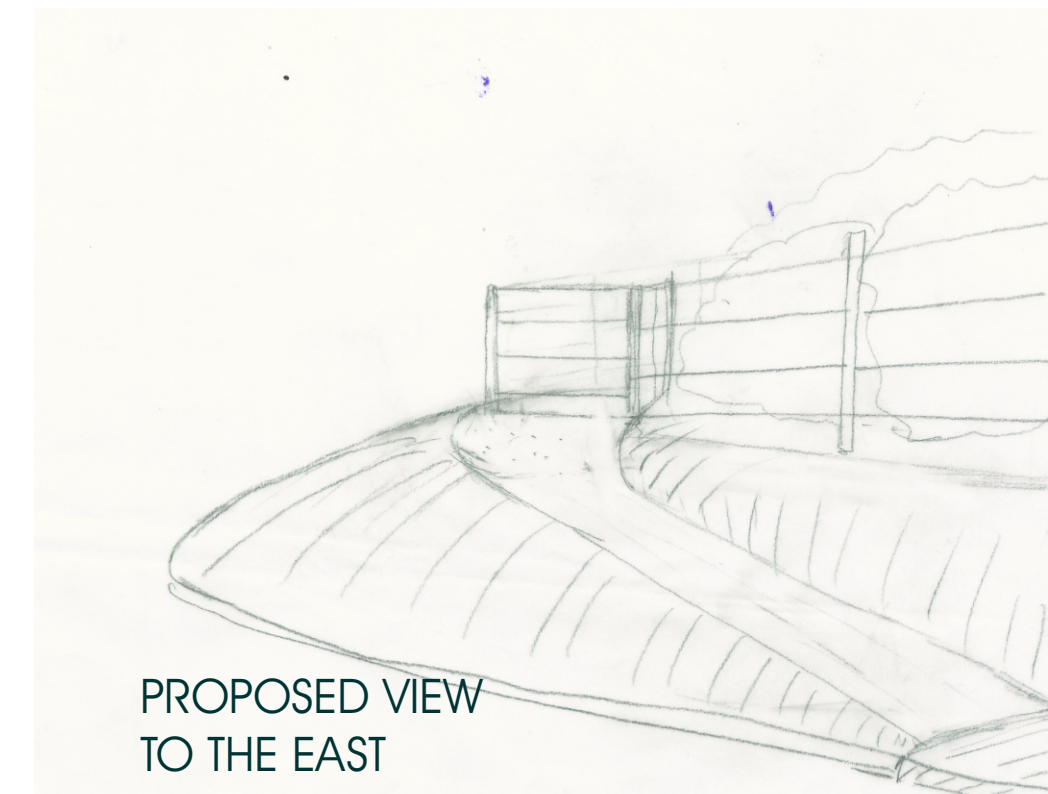


# TROOPERS HILL NATURE RESERVE DESIGN PROPOSALS - GREENDOWN ENTRANCE C

**DESIGN RATIONALE:**  
ENHANCE THE APPEARANCE OF THE ENTRANCE.  
CREATE A FOCAL POINT OF THE ENTRANCE TO ATTRACT PEOPLE IN.  
IMPROVE PEDESTRIAN SAFETY - OFFSET THE APPROACH TO THE ENTRANCE.  
INCLUDE THE AWARDED GREEN FLAG.



APPROACH PATH IS OFFSET FROM JUNCTION TO IMPROVE PEDESTRIAN SAFETY.

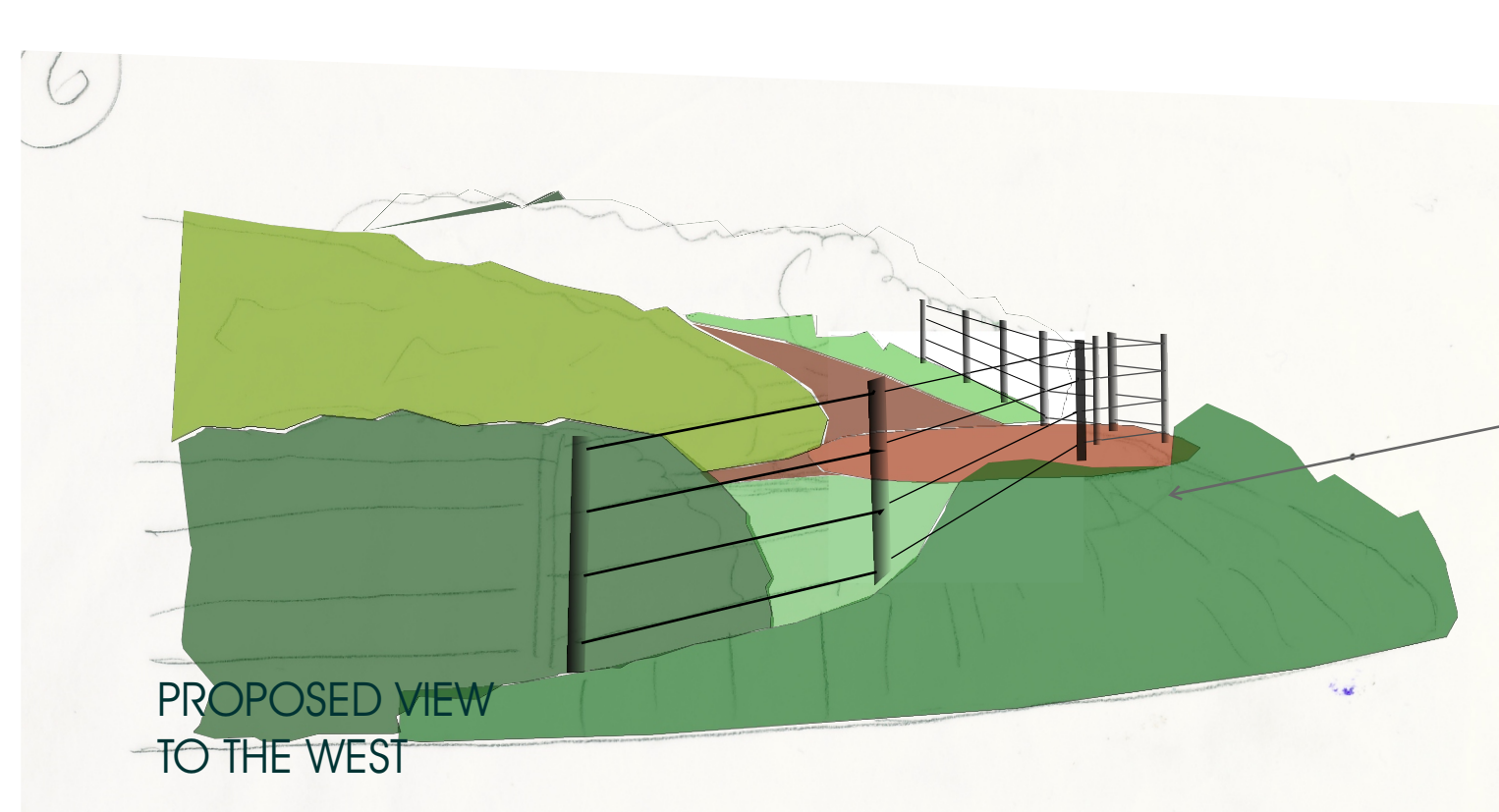
A SEMICIRCULAR LANDING STAGE ENCOURAGES PEDESTRIANS TO PAUSE BEFORE STEPPING OUT.

EXISTING HEDGE RETAINED.

COLOURED MACADAM PAVING TO COMPLEMENT EXISTING SOIL COLOUR & LANDSCAPE CHARACTER



LOW LEVEL PLANTING OF NATIVE SHRUBS TO FORM A PHYSICAL BARRIER - SPECIES TO BE CONFIRMED WITH WILDLIFE OFFICER.



ANGLE OF KISSING GATE DIRECTS PEOPLE ALONG PATH RATHER THAN DOWN THE BANK.

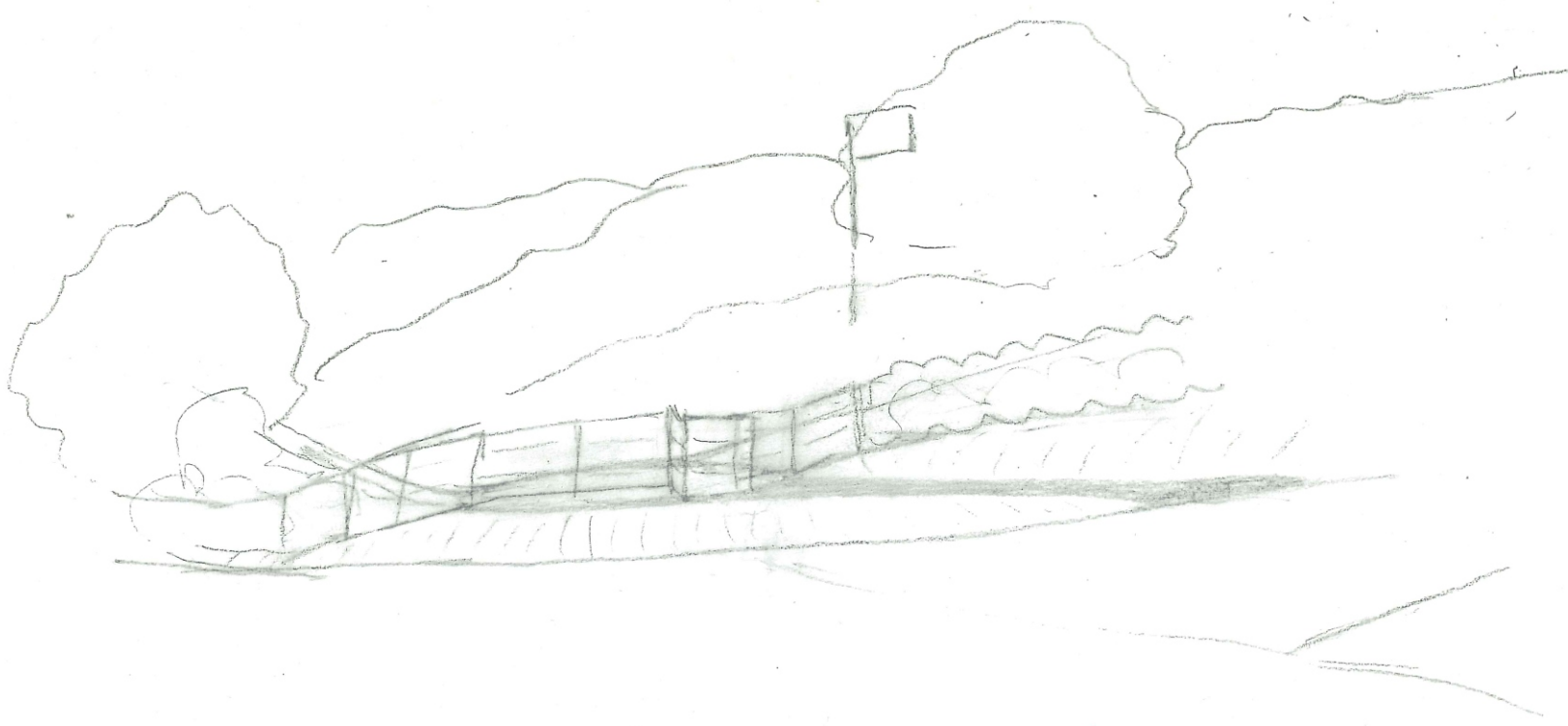
CREATE LEVEL CIRCULAR AREA OF HARDSTANDING BY SLIGHT EXCAVATION OF BANK. ALLOWS PEOPLE TO PAUSE, TURN AND VIEW INTERPRETATION BOARD.

SMALL AREA DISCOURAGES ANTISOCIAL GATHERING

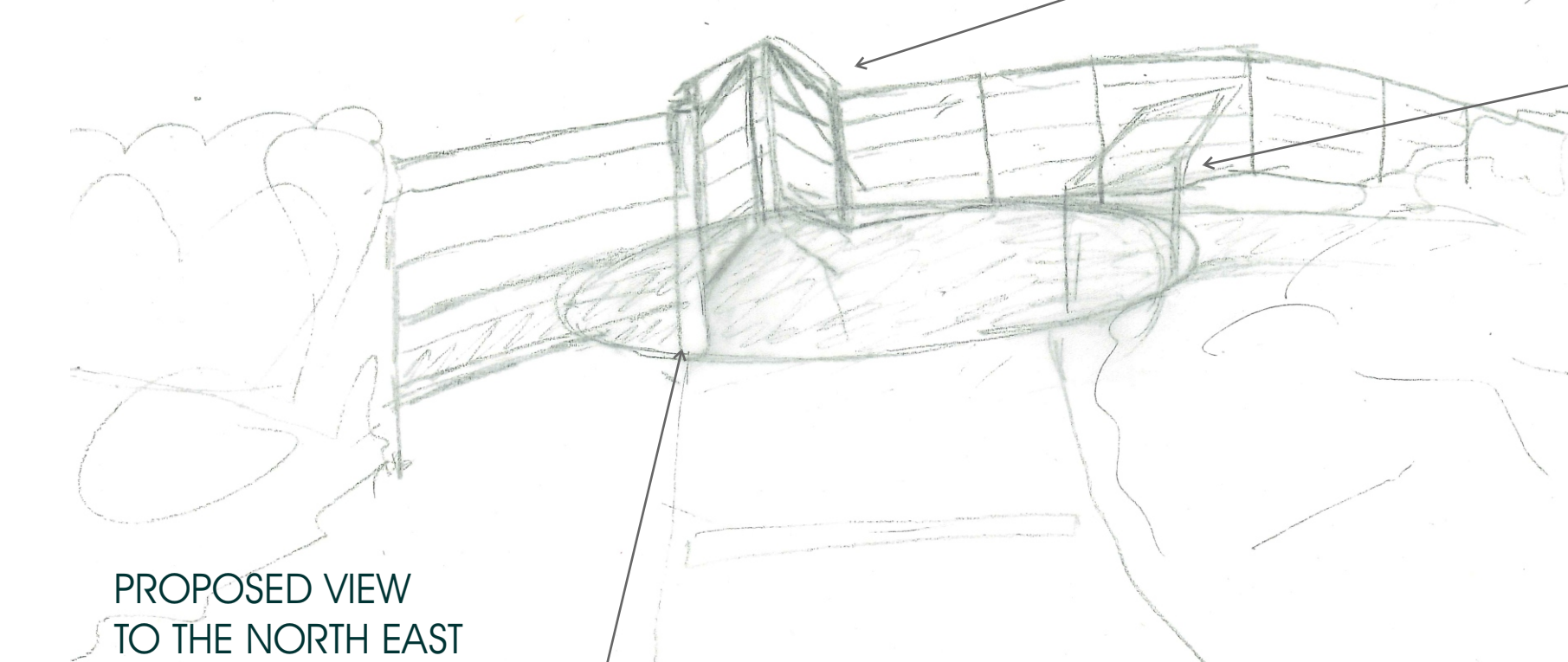
CONNECTS UPPER AND LOWER PATH.

REGRADE AND IMPROVE UPPER PATH.

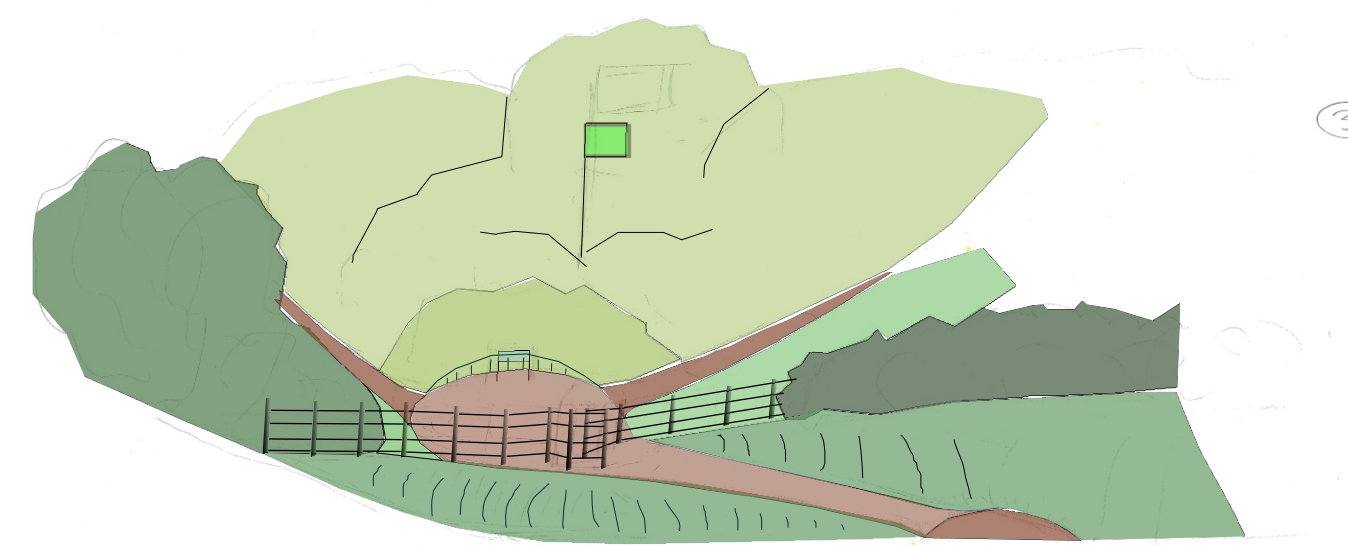
REMOVE TIMBER FENCE & REPLACE WITH METAL GALVANISED STEEL ESTATE FENCING - PAINTED BLACK.  
EXTEND ESTATE FENCING TO TOP OF GREENDOWN ROAD TO CONTINUITY OF STYLE



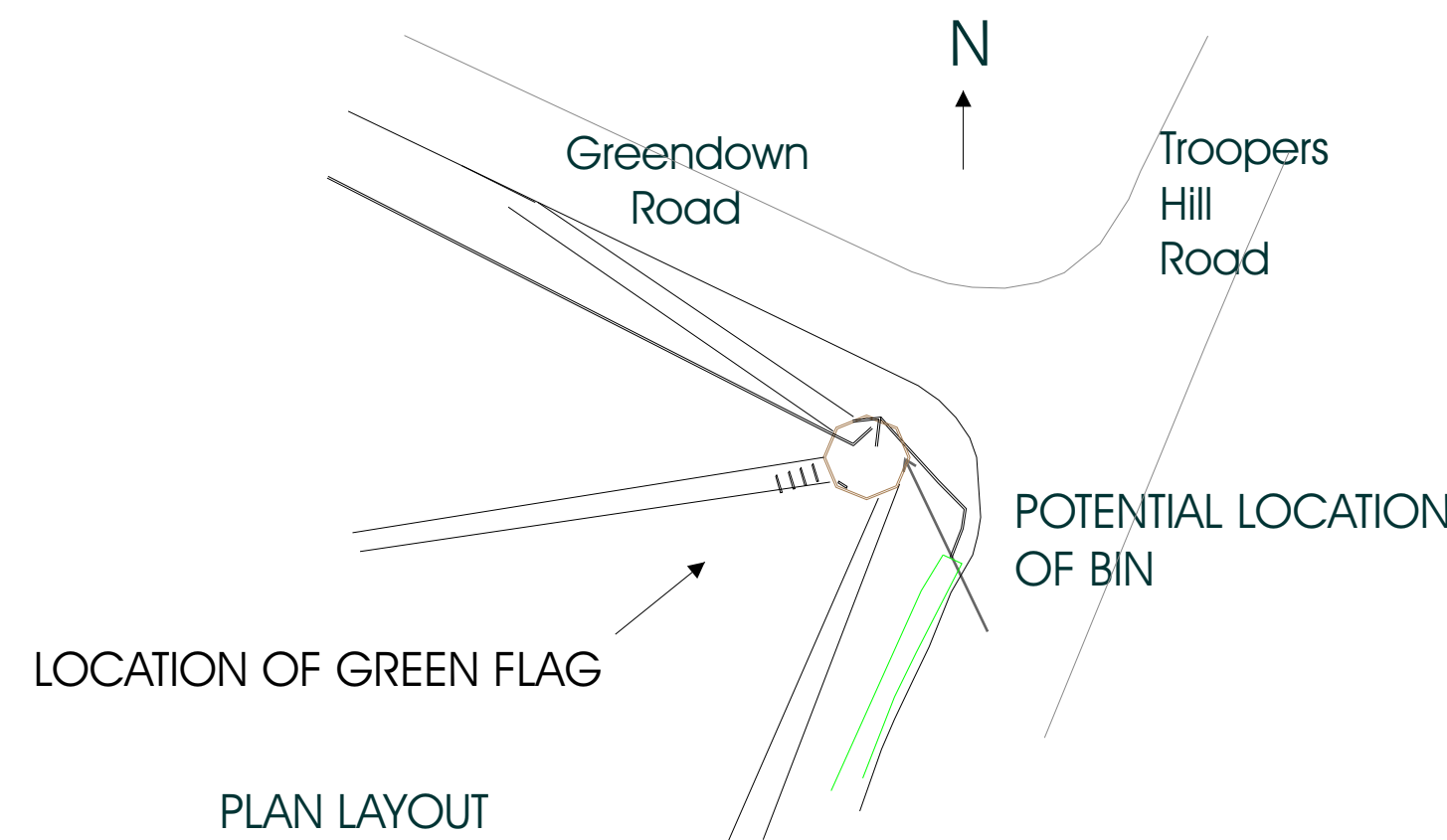
STEPS TO ENTRANCE REMOVED.  
BANK EXCAVATED SO THAT LINE OF LOWER PATH IS CONTINUOUS WITH THE ENTRANCE.  
CLARITY OF DIRECTION.



KISSING GATE ALLOWS PEDESTRIAN & PRAM ACCESS BUT PREVENTS MOTORCYCLE ACCESS.



PROPOSED VIEW OF GREENDOWN ENTRANCE TO THE SOUTH WEST



PRODUCED FOR FRIENDS OF TROOPERS HILL  
FUNDED BY AWARDS FOR ALL



Revision No.	Revision Note	Date	By
<p><b>BRISTOL CITY COUNCIL</b> Landscape Design Team Planning, Transport &amp; Sustainable Development Brunel House, St George's Road, Bristol BS1 5UY Tel: 0117 9223719 Fax 0117 922 4637</p>			
Project Title: TROOPERS HILL NATURE RESERVE			
Drawing Title: DESIGN PROPOSALS FOR GREENDOWN ENTRANCE			
Date: 15/01/08	Drawn by: Fiona Sharman	Checked by: Initials	Scale: NTS
Drawing Issue:	Project No:	Drawing No:	Rev
		07/017	1001 / 1